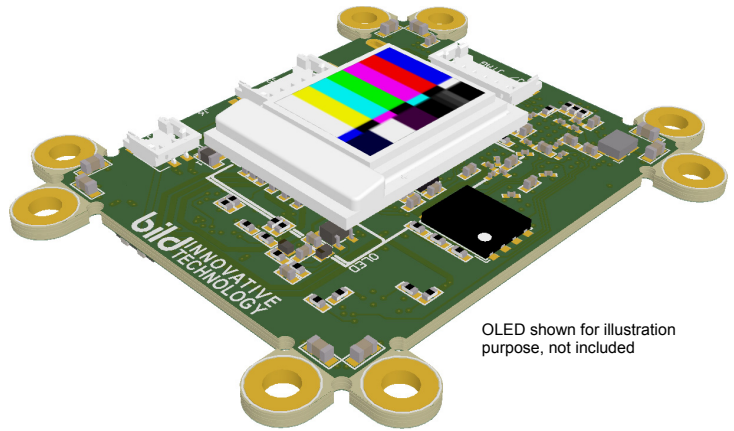
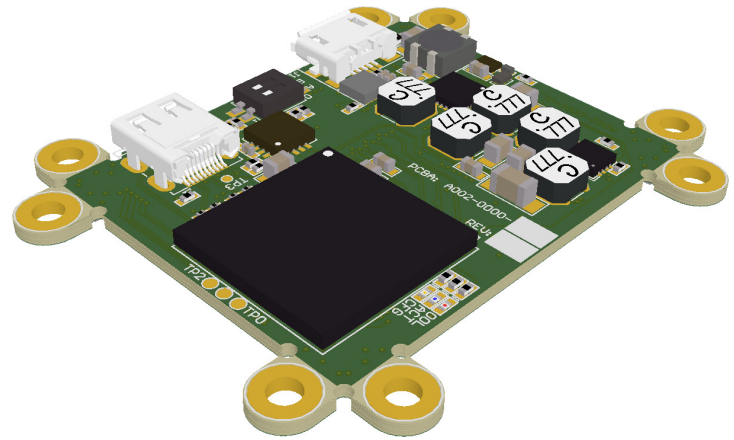


Features

- Supports all Variants of EMA-101204 (SXGA096)
- Low Power: < 1W (less OLED)
- Digital RGB Video Interface
DVI, HDMI (no HDCP): 24bRGB
- Monocular: 1 OLED Channel
- Supported Video Timing Format
SXGA
- User-selectable Control Options
USB, UART, Discrete
- Continuous Image Optimization
- Mechanically Centered OLED Image
- Power Enable / Disable Feature
Rapid start-up
Ultra-Low-power disable
- User-configurable Mounting Features (Tabs)
- Industrial Temperature Range (-40~70C)



OLED shown for illustration purpose, not included



Applications

- Head Mounted Displays (HMD)
- Wearable Devices
- Virtual / Augmented Reality
- Embedded Viewers
- Electronic Viewfinder
- Instrumentation
- Hobby

General Description

The BIT1012A is a high-performance low-cost full-featured driver supporting all variants of the eMagin SXGA096 OLED. Integrated dual-mode DVI / HDMI digital video input and multiple control interface options enable a compact single-board design suitable for virtually any application including binocular HMDs for users with narrow interpupillary distance (IPD).

Product Highlights

Lightweight low-profile compact design is optimized for both monocular and binocular display devices for both direct-view and reflective eyepiece designs. Symmetrical layout placing the OLED image centroid in the exact center of the Driver supports easy monocular left/right eye switching as well as binocular side-by-side mounting. Image position and orientation controls facilitate rotation and binocular convergence adjustments / fine-tuning.

With all connectors located on a common edge directly supports plenum style end-product wire harnessing. This is especially helpful for routing wires along the upper edge of a binocular display assembly to minimize look-down obscuration of the mechanical structure.

Eight configurable #2 mounting tabs strategically arranged in 90-degree pairs at each corner provide a flexible easily customizable attachment system suitable for a variety of mechanical configurations. Unused mounting tabs can be simply snapped off and discarded.

The user selectable control interface supports easy adaptation to the most popular serial and discrete control interfaces. The 3.3V UART control option features a unique chip-select allowing multiple OLED drivers to be controlled by a common Tx/Rx pair, a unique feature intended specifically for binocular configurations. Combining the BIT1012A OLED Driver with the BIT1100A discrete control module yields a complete standalone monocular display driver solution with convenient 3-button user controls.

Low operational power plus reduced-power standby and ultra-low-power disable modes provide flexible power control necessary to ensure long battery life for today's and future portable devices.

Additional features such as programmable brightness control steps, maximum brightness, built-in test patterns, user selectable gamma, video inversion, and video format query give the user all the necessary degrees of control to customize and diagnose the end-product – these user control features are unique to Bild's OLED Drivers.

Technical Specifications

Parameter		min	typ	max	unit
Supply Voltage	J4 Power Connector	2.5	5.0	5.5	V
	USB Connector	4.75	5.0	5.25	V
Power Consumption (less OLED)	Operating	-	850	1000	mW
	Reduced-Power Standby (input video active)		665		mW
	Power Disabled		1		mW
Video	Input Type 1: DVI	1.0			
	Input Type 2: HDMI - HDCP not supported	1.3a			
	Color Depth	24b RGB			
	Frame Resolution	1280x1024			HxV
	Frame Rate	60 ~ 85			Hz
Control Interface	Option 1: USB (UART protocol)	USB 2.0, 115.2kbps			
	Option 2: UART	3.3V, 115.2kbps			
	Option 3: Discrete	2-wire, integrated pullups			
Temperature (ambient)	Operating Industrial	-40	-	70	°C
	Storage	-40	-	85	°C
Mass		7			g

Absolute Maximum Ratings

Stresses above those listed under Absolute Maximum Ratings may cause permanent damage to the device. This is a stress rating only; the functional operation of the device at these or any other conditions above those indicated in the operational sections of this specification is not implied. Exposure to absolute maximum rating conditions for extended periods may affect device reliability.

Notes: 1) Reverse-polarity protection

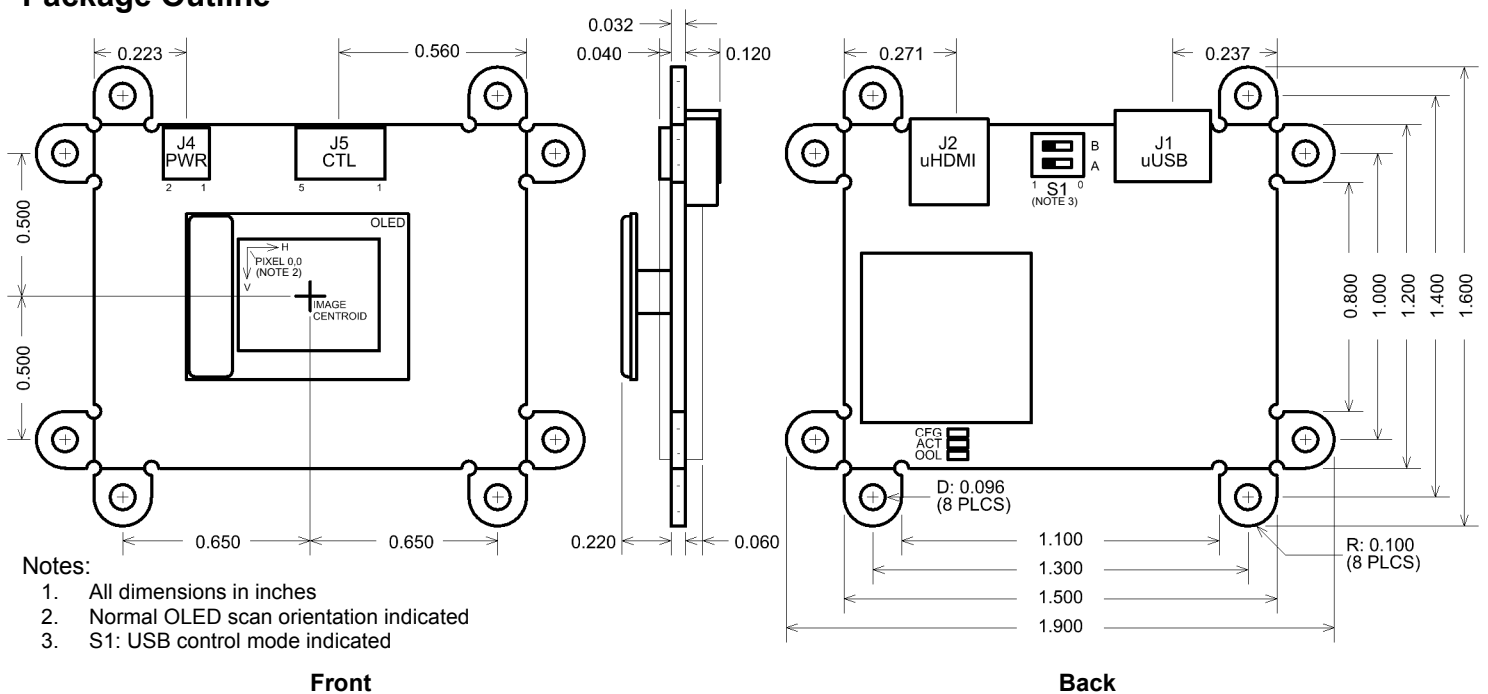
Parameter		min	max	unit	Note
Supply Voltage	J1 USB Connector	-0.3	6.0	V	
	J4 Power Connector	-6.0	6.0	V	1
Digital IO	J1 USB: DN, DP	-0.5	3.63	V	
	J2 TMD5	-0.4	3.85	V	
	J2 DDC: SCL, SDA	-0.5	7.0	V	
	J5 (pins 1~3)	-0.4	3.85	V	
Temperature (ambient)		-40	85	°C	

ESD Caution

ESD (electrostatic discharge) sensitive device. Electrostatic charges as high as 4000 V readily accumulate on the human body and test equipment and can discharge without detection. Although this product features ESD protection circuitry, permanent damage may occur on devices subjected to high energy electrostatic discharges. Therefore, proper ESD precautions are recommended to avoid performance degradation or loss of functionality.



Package Outline



Notes:

- All dimensions in inches
- Normal OLED scan orientation indicated
- S1: USB control mode indicated

Connectors

J1: USB

Type: micro USB Type B
Pinout:

Pin #	Function
1	+5V / Supply Power
2	USB_DN
3	USB_DP
4	nc
5	GND

J2: uHDMI

Type: micro HDMI Type D
Pinout:

Pin #	Function
1	HPD
2	nc
3	TMDS_D2+
4	GND
5	TMDS_D2-
6	TMDS_D1+
7	GND
8	TMDS_D1-
9	TMDS_D0+
10	GND
11	TMDS_D0-
12	TMDS_CK+
13	GND
14	TMDS_CK-
15	nc
16	GND
17	DDC_SCL
18	DDC_SDA
19	+5V

J4: Power

Manufacturer: Molex
Manufacturer PN: 78171-0002
Mating PN: 78172-0002
Pinout:

Pin #	Function
1	Supply Power
2	GND

J5: Control

Manufacturer: Molex
Manufacturer PN: 78171-0005
Mating PN: 78172-0005
Pinout:

Pin #	Function (by S1 A B Control Setting)			Pull-up/down
	0 0 Discrete	1 0 UART	1 1 USB	
1	PD1	TX	n/a	50kOhm pullup to 3.3V
2	PD2	RX	n/a	50kOhm pullup to 3.3V
3	n/a	CSn	n/a	10kOhm pulldown to GND
4	PWR_EN			10kOhm pullup to supply voltage
5	GND			n/a

Operation

Supply Power

The BIT1012A supports application of supply power via either the micro USB connector or dedicated Supply Power connector J4. The dedicated J4 Supply Power path provides reverse polarity protection whereas the USB supply power path does not. Automatic input supply power selection is performed according to the following table:

USB Pwr	J4 Pwr	Selected Supply Power
No	Yes	J4 Power
Yes	No	USB Power
Yes	Yes	J4 Power

Setting serial command **POWER** to **0** places the BIT1012A in a reduced power state in which all video functions are disabled but serial communications remain active. Restoring serial command **POWER** to **1** returns the BIT1012A to a fully operational state.

Deasserting J5 pin 4 (PWR_EN) to logic low places the BIT1012A into an extremely low power state in which serial communication is unavailable. Reasserting PWR_EN to logic high will cause a re-start of the BIT1012A.

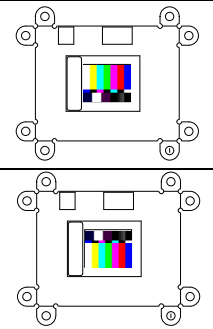
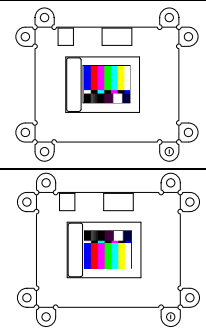
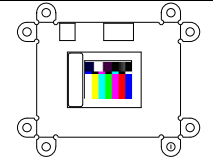
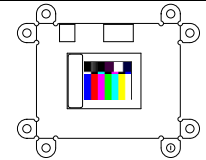
Input Video

The BIT1012A supports both HDMI 1.3a and DVI 1.0 formats at 24 bit RGB. EDID contents specify the following timing formats:

Parameter	VESA Standard 1280x1024_60		Reduced Blanking (RB)					
			1280x1024_60(RB)	1280x1024_75(RB)		1280x1024_85(RB)		
FP Pixel Clock Frequency	108.00 MHz		81.187 MHz		101.484 MHz		115.010 MHz	
FH Horizontal Frequency	63.981 kHz		61.880 kHz		77.350 kHz		87.660 kHz	
FV Vertical Frequency	60.020 Hz		60.020 Hz		75.025 Hz		85.024 Hz	
HS Horizontal Sync	112 col	1.037 us	8 col	0.099 us	8 col	0.079 us	8 col	0.070 us
HB Horizontal Backporch	248 col	2.296 us	12 col	0.148 us	12 col	0.118 us	12 col	0.104 us
HA Horizontal Active	1280 col	11.852 us	1280 col	15.766 us	1280 col	12.613 us	1280 col	11.129 us
HF Horizontal Frontporch	48 col	0.444 us	12 col	0.148 us	12 col	0.118 us	12 col	0.104 us
HT Horizontal Total	1688 col	15.630 us	1312 col	16.160 us	1312 col	12.928 us	1312 col	11.408 us
VS Vertical Sync	3 row	46.889 us	2 row	32.320 us	2 row	25.856 us	2 row	22.815 us
VB Vertical Backporch	38 row	0.594 ms	3 row	48.481 ms	3 row	38.785 ms	3 row	34.223 ms
VA Vertical Active	1024 row	16.005 ms	1024 row	16.548 ms	1024 row	13.238 ms	1024 row	11.682 ms
VF Vertical Frontporch	1 row	15.630 us	2 row	32.320 us	2 row	25.856 us	2 row	22.815 us
VT Vertical Total	1066 row	16.661 ms	1031 row	16.661 ms	1031 row	13.329 ms	1031 row	11.761 ms

Image Orientation

Image orientation is adjustable via discrete and serial control according to the following table.
ref: BIT-UG-0001: User Guide, OLED Driver UART Protocol

HSCAN	VSCAN	Image Orientation	HSCAN	VSCAN	Image Orientation
0	0		1	0	
0	1		1	1	

Control Interface – Channel Selection

The BIT1012A is controlled via one of several user-selectable interfaces according to the following table:

A B	S1 Switch Position		Selected Control Interface
	Physical		
0 0			Discrete
1 0			<i>Reserved</i>
0 1			UART
1 1			USB (Factory Default)

Control Interface - Serial

USB and UART serial control interface, protocol, and commands are described by the following documents:

- BIT-UG-0000** User Guide, UART Protocol, General
- BIT-UG-0001** User Guide, UART Protocol, OLED Driver

USB serial interface implements an FTDI FT234XD-R UART transceiver.

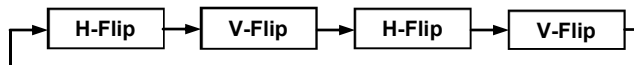
Control Interface - Discrete

Discrete control is implemented via a 2-wire logic interface whereby control action is initiated by driving one or both inputs to GND (logic low). These inputs can be driven by active digital logic or simple pull-down as by a normally-open switch. The control action is defined by the table below. All control actions are executed upon release (return to logic high) – no sustained assertion actions are supported.

PD1	PD2	Control Action
1	1	No operation
0	1	Brightness Increment
1	0	Brightness Decrement
0	0	Image Orientation Flip

Brightness Increment / Decrement steps are defined by the **BRTMOD** register (ref: BIT-UG-0001).

The Image Orientation Flip control action performs sequential alternating horizontal and vertical scan reversals (flips) upon successive assertions as follows:

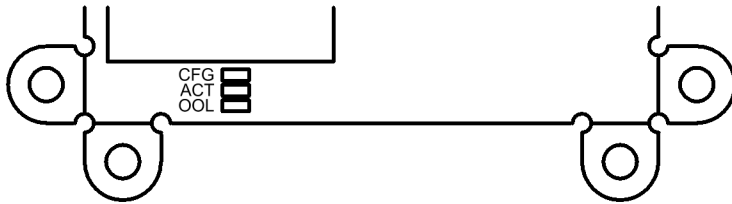


Status Indicator LEDs

The BIT1012A features three (3) status indicator LEDs as follows:

Label	Color	Status Function
CFG	Amber	ON Configuration incomplete / in progress
		OFF Configuration complete
ACT	Blue	Luminance modulation indicates processor activity
OOL	Red	ON HDMI / DVI clock not locked
		OFF HDMI / DVI clock locked

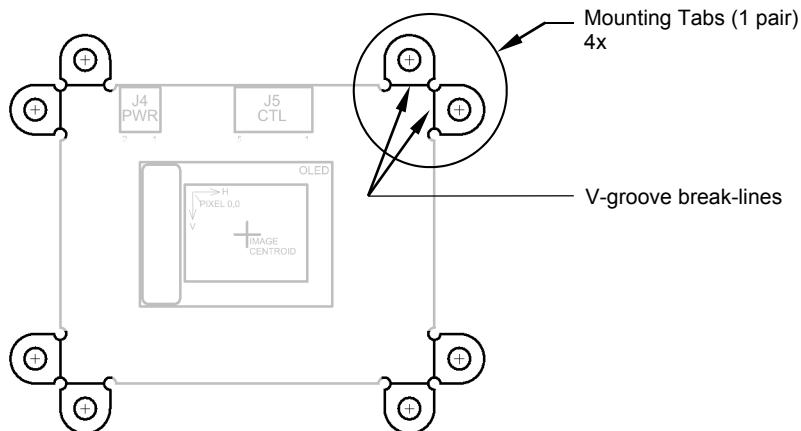
Status LED locations shown below:



ACT and OOL Status LEDs can be disabled via the **LEDEN** serial command (ref: BIT-UG-0001).

Mounting Tabs

The BIT1012A features eight (8) configurable EMI mounting tabs. These through-plated mounting tabs are located in pairs at the corners of the OLED Driver and provide high-frequency AC coupling to GND. To accommodate a variety of mechanical mounting configurations, these tabs can be removed as needed from the OLED Driver by breaking away at the pre-cut v-groove break lines. Care must be taken to prevent damage to the OLED Driver.



Contact

Bild Innovative Technology LLC
 2656 W Montrose Ave Suite 203
 Chicago, IL 60618
 (773) 697-9345
 (760) 450-6633
 pbeerdeke@bildinnotech.com